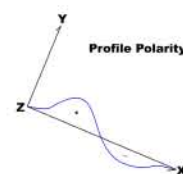
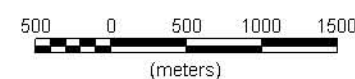
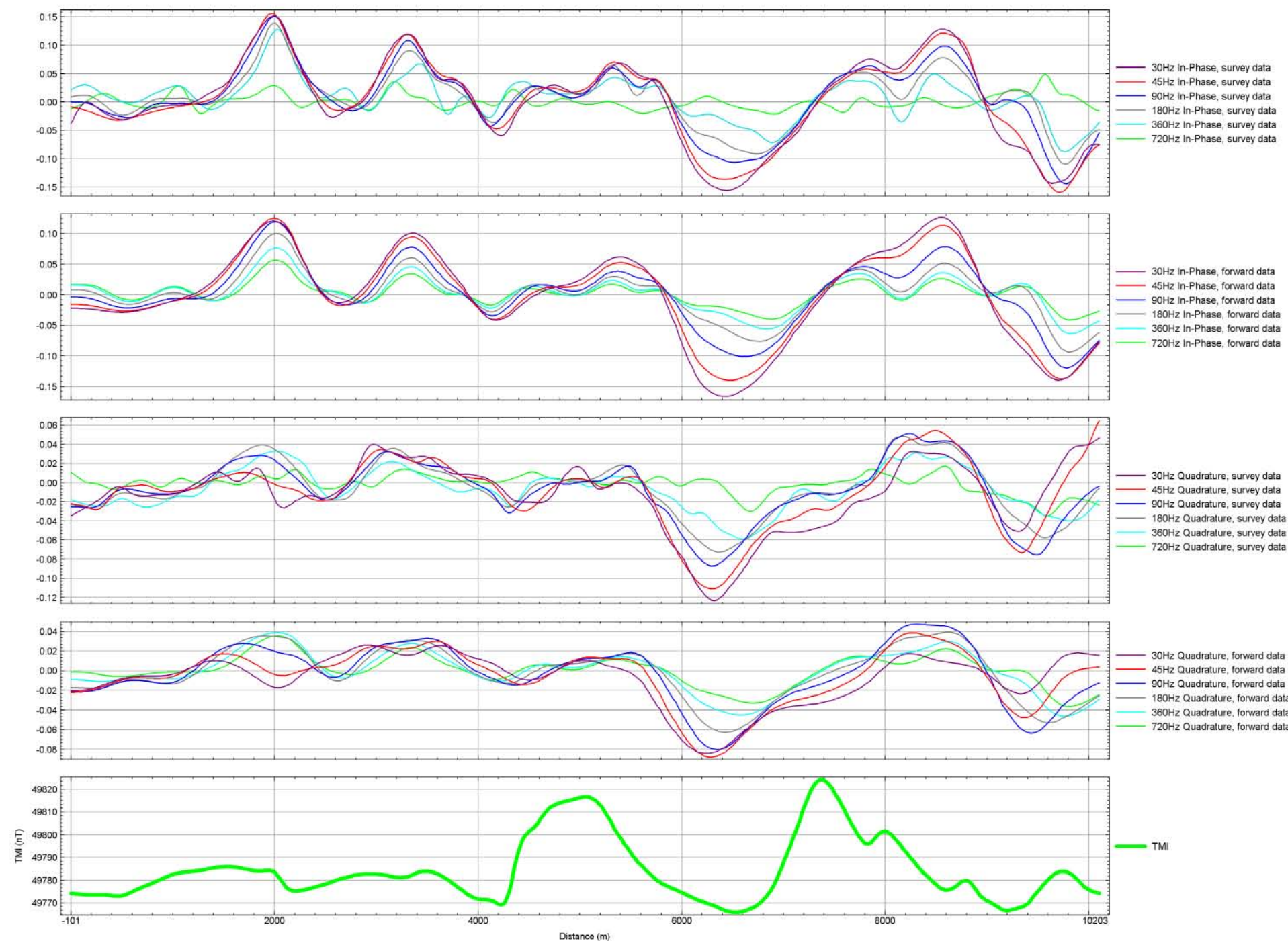


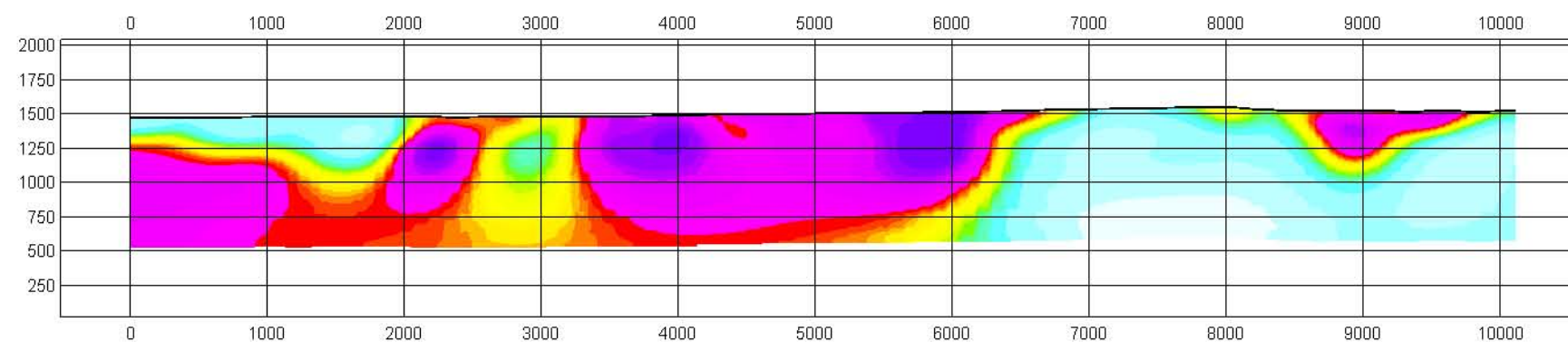
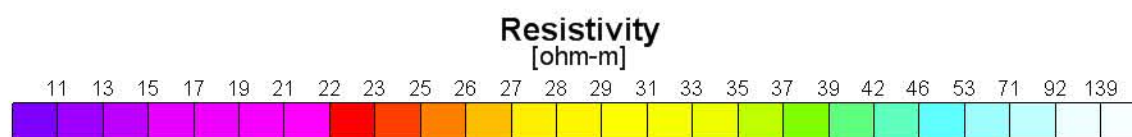
INVERSION PARAMETERS  
2D inversion code: Geotech Zvert2D-beta  
Model Mesh: 440 wide x 62 vertical,  
26.31m cell width,  
2 cells between sites  
Input Data: 6 frequencies (30-720Hz),  
In-Phase & Quadrature,  
Z/X In-line (only)  
Sampling: Data sampled to every 4 points  
(2304 total number of points)  
Input error: 1.3% to In-Phase & Quadrature  
(1-times error to 30Hz data)  
Output error: 94% RMS in 3 iterations  
Half-space resistivity: 30 ohm-m



### Line 1080

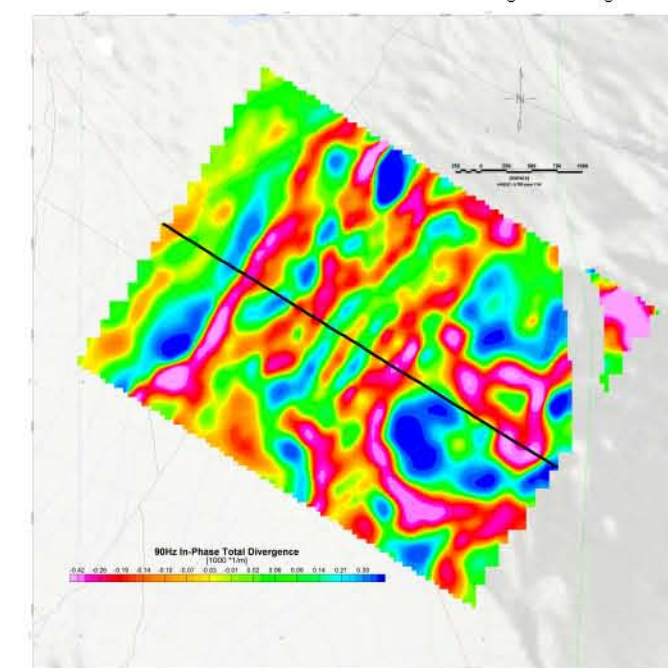


ELEVATION (ASL, m)



View looking North-East (Distance,m)

Flight Path of Line L1080  
over 90Hz In-Phase Total Divergence image



Sierra Geothermal Power Corp.  
Alum Block  
Tonopah, Nevada

Geotech ZTEM System  
Resistivity-Depth Image  
Line L1080  
Flight 8 - Nov 13, 2009

 Flown and processed by Geotech Ltd.  
245 Industrial Parkway North.,  
Aurora, Ontario, Canada L4G 4C4  
www.geotech.ca

Jan 2010